



BE PART OF THE TRADITION.

2020 National Championship Rules Fort Pierce, FL

THE FOLLOWING RULES APPLY FOR ALL TEAMS AND ANGLERS FOR THE 2020 SKA
TOURNAMENT TRAIL NATIONAL CHAMPIONSHIP:

All members of a National Championship crew must be current SKA competition members. SKA Corporate Partners and members of the press are the only exceptions and must be approved by the SKA management prior to fishing. ALL participants must agree to understand and abide by tournament rules listed below.

Open and Small Boat Class boats are competing for their own set of prizes in the Nationals and are unable to win any prizes in any other Class (and vice versa).

By registering for a tournament, the captain, owner or person responsible for the team's registration acknowledges that all anglers and crewmembers on board the boat will abide by tournament rules.

It is expressly understood that all registered participants and non-registered occupants of their boats enter into the events in the Southern Kingfish Association LLC voluntarily and at their own risk. Further, each registered and non-registered participant on behalf of other family members and/or executors agrees to release and hold harmless Southern Kingfish Association LLC, its officers, directors, owners, members, representatives, agents, employees, independent contractors, volunteers, promoters, advertisers, sponsors, partners, joint ventures, affiliates, assigns, polygraph examiner, the city and county where the events are held and all other persons connected directly or indirectly with the operation of any event in the Southern Kingfish Association LLC (collectively, "Released and Indemnified Parties") from any and all claims, losses, damages, demands, causes of action, suits and liabilities of every kind arising out of, related to, or resulting from the tournament, activity or event, including but not limited to all events in the Southern Kingfish Association LLC, including without limitation, any claim for loss, damage or destruction of property, or injury (including death), regardless of whether such loss arises in whole or in part from the negligence of any Released and Indemnified Party. This release is intended to be as broad and inclusive as

5043-B MATTIE ST. MOREHEAD CITY, NC 28557 | 800-852-6262 | WWW.FISHSKA.COM



BE PART OF THE TRADITION.

possible under applicable law, and if any portion of this release is held invalid or unenforceable, the balance shall continue in full force and legal effect. Jurisdiction over the tournament trial shall be exclusively that of each tournament director or committee. All parties agree to be bound by the tournament director's decisions without exception.

Winners, or any anglers, may be requested to submit to and pass a polygraph test and/or sign an affidavit prior to being presented any prize. This must be done in a timely manner. Failure to submit to a polygraph test automatically revokes all claims to any prizes won. All members of any SKA team or tournament participants entering and participating in National Championship event agrees that all polygraph results are final and agree that the subject of the polygraph will not be challenged beyond the posting of the results.

Interpretation of these rules will be left exclusively to the Tournament Committee.

The tournament committee reserves the right to refuse an entry into the tournament.

A Florida saltwater fishing license is required for each team member except from a boat which has a valid recreational vessel saltwater fishing license or any FL Resident 65 years or older, or anyone excluded by FL law. Go to www.myfwc.com to obtain current Florida fishing regulations.

CHECK OUT

On tournament day, competition hours are

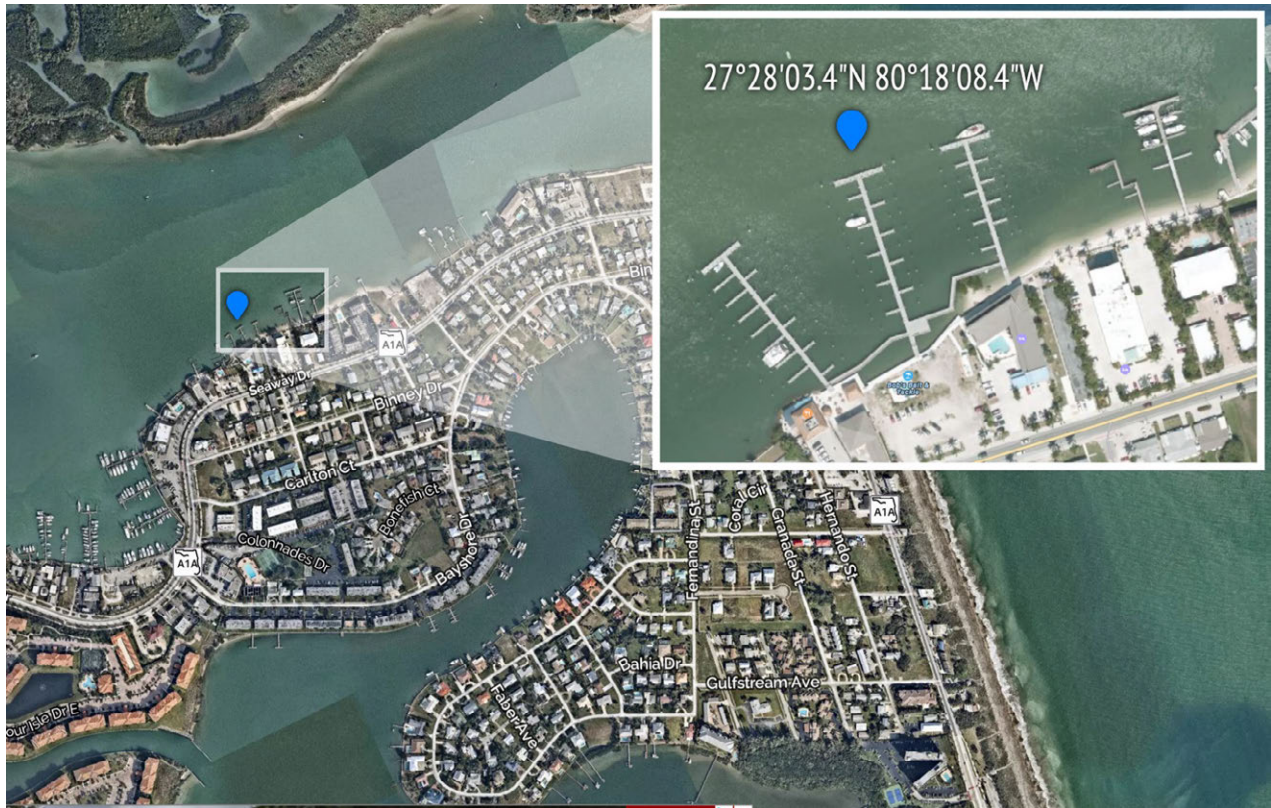
Day 1 - 7:10 am until 5:30 pm.

Day 2 – 7:10 am until 4:00 pm

Starting at 6:00 AM boats will pass by a pre-selected point where boat numbers will be presented from your vessel. Tournament officials will acknowledge receipt on VHF channel 72. (See image below)



BE PART OF THE TRADITION.



After your team number is acknowledged proceed just outside of the inlet. Boats can hold outside of the inlet but cannot be more than **500 yards** from the tip of the Jetty (in any direction).

No purchasing of bait, passing of bait between boats or obtaining bait from bait pen after checkout. Bait fishing is not allowed after checkout and up until after shotgun start.

BOUNDARIES

The only boundary for this tournament is there will be no fishing Bahamian waters.

COMMUNICATIONS

Official National Championship communications will be sent to Team Captains via text message, phone, emails and/or on <http://skanationals.com>

5043-B MATTIE ST. MOREHEAD CITY, NC 28557 | 800-852-6262 | WWW.FISHSKA.COM



BE PART OF THE TRADITION.

Tournament officials will monitor and communicate with boats on VHF Channel 72 during checkout/check in.

TOURNAMENT

Captains and crew members are responsible for following and adhering to all local, state, and federal fishing and boating laws. This includes having the proper fishing license.

All fish must be caught on rod and reel.

All boats must adhere to state of Florida recreational bag limits as they pertain to all eligible species. Boats possessing commercial licenses may not utilize them during tournament competition.

Every angler is expected to conduct herself/himself in a manner that reflects the wholesomeness and image of the organization both on and off the water. While the tournaments are highly competitive in nature, good sportsmanship is paramount at all times. Any team who displays poor sportsmanship, violates these rules, or any local, state or federal law, or brings unfavorable publicity to the sport is subject to disqualification at the tournament director's discretion.

If a participant receives a ticket for violating any local, state or federal law that team is subject to disqualification at the tournament director's discretion.

Once checked out the boat may not touch land for any reason, or they will be automatically disqualified from that specific tournament day.

No passing of anything between boats during the tournament. Doing so would result in automatic disqualification from that specific tournament day.

All hooks, wire, rigs and/or any other foreign objects must be removed from kingfish eligible for competition.

There will be no feeding and/or stuffing of any kingfish with any baitfish, fish and/or any foreign objects (ie ice, weights, etc). This will result in immediate disqualification.

It is the official policy of the SKA to polygraph tournament winners as well as random tournament participants in SKA produced/sanctioned events and National Championship when deemed necessary or possibly as the result of any and all protests. Any participant in any SKA event, sanctioned or produced, who refuses to take the test will automatically lose



BE PART OF THE TRADITION.

his or her SKA membership and be disqualified from the event. All members agree that the results of the test will be final and accepted by the participant(s)

WEATHER

In the event that weather conditions arise that are deemed unsafe for the average registered boat by the tournament officials, the tournament may be called off for that day. No refunds will be made in the event of cancellation. It is expressly understood that the permitting of fishing by tournament officials does not ensure the safety of registered anglers or any other occupants of their vessels. Captains, anglers and all other members of registered boats must determine in their own judgment whether to fish under the given conditions based on factors including but not limited to the seaworthiness of their boat and their own seamanship.

WEIGN IN / SCALES

Scales Open daily at 3:00 PM at Causeway Cove Marina

Boats **MUST** be checked in with a tournament official by VHF Radio Channel 72 no later than **5:30** pm on **Day 1** and **4:00** pm on **Day 2**.

All boats with fish to weigh must be visually checked in by displaying their boat number to the tournament committee at the designated location by tournament committee no later than **5:30** pm on **Day 1** and **4:00** pm on **Day 2**. **Teams must declare if they have a fish to weigh at boat check in.**

Teams **MUST** check in with DOCK CONTROL tournament official (**Channel 68**) prior to coming into the **weigh in dock**.

Teams that do **NOT** have a fish to weigh in **MUST** check in with the tournament check in official to announce they have made it back in safely. The Coast Guard will be notified of ALL unreported vessels so a search can commence.

All fish must be brought to the tournament headquarters by boats catching same under its own power. Fish must be unloaded at designated docks only. Fish cannot be transported over land.

The tournament committee reserves the right to inspect any boat entered in competition, including an on-board inspection.

Teams cannot touch land until their fish has been off loaded at weigh in.

5043-B MATTIE ST. MOREHEAD CITY, NC 28557 | 800-852-6262 | WWW.FISHSKA.COM



BE PART OF THE TRADITION.

All king mackerel submitted for weigh-in must be at a minimum of 10lbs to count for points, in fresh, edible condition and caught on tournament day during competition hours.

No mutilated fish will be accepted for weigh-in. Mutilation is defined as any damage which may significantly impair the fish's fighting ability.

Teams will be weighed in the order they are checked in.

Fish being weighed in the tournament will be inspected for all manners of cheating by a tournament official.

In the event that two or more king mackerel are the same weight, the winner shall be determined by the earliest weigh-in time.

All decisions made by the weigh master & tournament director are final. Results are unofficial until determined official by tournament director.

The winning fish and all fish entered and or donated become the exclusive property of the tournament.

PROTEST

All protests concerning the determination of tournament prize winners shall be made to the tournament official and shall be accompanied by \$500 cash.

ANY AND ALL PROTESTS WILL BE ADDRESSED THROUGH THE TEAM CAPTAIN ONLY

All protests shall be made no later than **fifteen minutes** after the last fish has been weighed. In the event that a protest is upheld by the tournament, the \$500 cash deposit will be returned.

Any disqualifications will result in forfeit of winnings and may result in expulsion from the Southern Kingfish Association. All decisions made by the tournament director will be final.

RELEASE

By registering for the tournament, all captains, anglers and occupants of their boat hereby consent that tournament officials may use without payment or restriction, any photographs, video or interviews in which he or she may appear for any purpose whatsoever, including but not limited to resale, advertising and promotional material.



BE PART OF THE TRADITION.

ADMINISTRATIVE

All winnings over \$600 will receive a 1099 and the winnings will be made out to the individual or company listed on the W9 Form. A member of the team must be present to receive the check.

All other Official SKA Rules and Regulations apply.